



# Kilpa's guidebook for coastalviewhouse

## Sightseeing

If you would like to plan a few activities before you arrive on Portland, here are a few suggestions of places to visit I recommend during your stay. Some places like Portland Alpacas and Andrew Simpson center you will need to pre-book for families, depending on availability.



### Portland Bill Lighthouse Visitors Centre

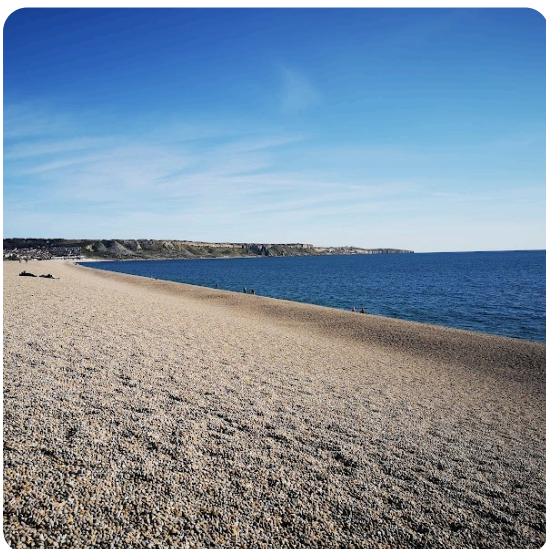
8 locals recommend

Portland Bill is a fully operational lighthouse that offers guided tours for guests. You can walk up the steep 153 steps to the top to enjoy the picturesque views and to watch the sailboats and yachts sail past. It is a MUST SEE landmark in Portland!!

There is a little shop where you can buy postcards and souvenirs.

The Lobster Pot is always good for a quick drink or an ice cream on a hot summer's day.

TIP: take some pound (£) coins for the car park



### Chesil Beach Weymouth

16 locals recommend

This is a lovely 18 miles long pebble beach from Portland to West Bay. It attracts families and fishermen. Remember to bring pound coins for the car park.

There are amazing views of Chesil beach from the Olympic Rings viewpoint.

There is a cafe open near the car park and information centre.



## SEA LIFE Weymouth

138 locals recommend

I would recommend a visit to Sea Life Centre for families with children . It is a 26 minute drive (9.2 miles) and there is a car park just outside. They are open from 9.30 am to 5 pm. There is also a Pirate Adventure Mini Golf next door too.



## Sandworld Weymouth

44 locals recommend

This place is suitable for all ages. It allows you to appreciate the skilled artists and attention to detail. It has an area where you can play with sand. There is also a quiz available which is fun!

Please visit their website for opening times.



## D-Day Centre & WW2 Museum - Portland, Dorset

44 locals recommend

An exciting family attraction offering an immersive experience of a wartime dockyard on Portland. It has an array of original WW2 artifacts, weapons and even a restored Sherman tank.

To enhance your experience, try to handle the weapons, dress up in authentic WW2 uniforms and history lovers will love this place.

 Photo of recommendation

## Durdle Door

567 locals recommend

It is one of the most photographed landmarks along the Jurassic coast. It is a natural limestone archway standing in the sea and is part of the World Heritage Site. It is extremely popular so I recommend an early start. You can always take a picnic with you.



## South West Coast Path

The South West Coastal path is a National trail. It is great for people who enjoy hiking and walking and admire the fantastic views! The path behind our house leads to the iconic white and red striped lighthouse, Portland Bill. This is a fully operational lighthouse and you can have a guided tour.

From our house, turn left and walk 50 metres and then turn left along a small path that will lead you to the sea cliffs. At this point turn right and carry on walking towards the lighthouse.

TIP: Bring good walking shoes or hiking boots



## Portland Museum

54 locals recommend

If you would like to learn about the history of Portland, you can visit Portland museum and see interesting artefacts and fossils. There is a quiz for children as well.

It is extremely closeby 2mins drive or 1 mile to walk from our house.



## Tout Quarry Sculpture Park & Nature Reserve

66 locals recommend

Tout Quarry Nature Reserve and Sculpture Park is an abandoned stone quarry which has now been turned into a stone sculpture park. Now one of Portland's most popular attractions, you can discover over 60 hidden sculptures in the Quarry, such as Anthony Gormley's 'Still Falling' sculpture and enjoy the stunning views over Chesil Beach and Portland Harbour. The park is also a haven for nature especially for those with a love of wild flowers and butterflies.



## Church Ope Cove

80 locals recommend

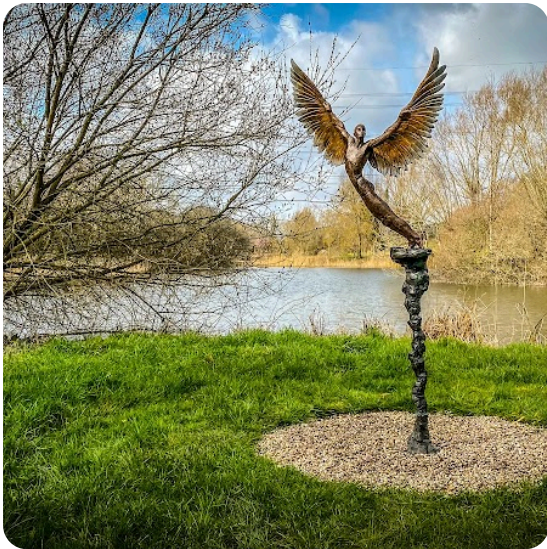
This is a hidden gem walking distance from Portland Museum. The stunning views are breathtaking. I would recommend to wear proper walking shoes.



## Bennetts Water Gardens

18 locals recommend

An 8-acre tranquil garden set in former clay pits near Weymouth. Home to the National Plant Collection of water lilies, it features a Monet-style Japanese Bridge, ponds, woodland walks, a Tropical House, and a museum tracing local history. Enjoy relaxing paths, wildlife, and a café serving homemade lunches, cream teas, and cakes.



## Sculpture by the Lakes

106 locals recommend

A peaceful 26-acre sculpture park blending art and nature, perfect for a relaxing day out. Wander through lakeside paths and discover inspiring large-scale artworks in a tranquil countryside setting.

Note: For visitors aged 14+, no dogs allowed. Pre-booking recommended.

---

## Food scene



## Crab House Café

159 locals recommend

This is a lovely place to try oysters and delicious fresh seafood. I would recommend to pre-book as it is very popular and does get busy. Staff are very friendly and welcoming.



## Mona's Thai and Asian Cuisines

6 locals recommend

This Thai restaurant in Weymouth has good quality food and amazing service.



### The Lobster Pot

56 locals recommend

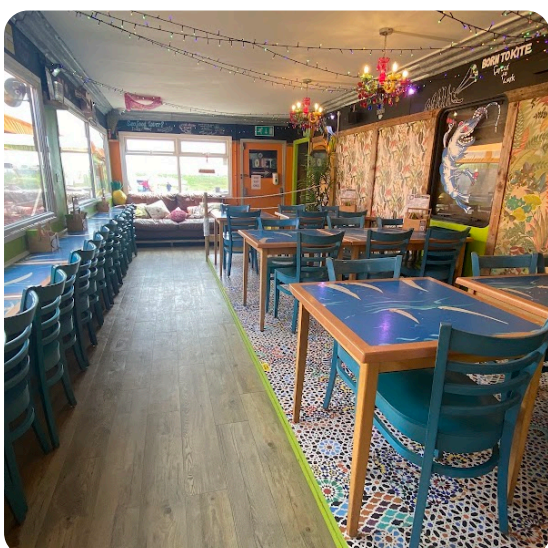
This is perfectly situated near Portland Bill lighthouse and along the Southwest coastal path. They also serve ice cream from their kiosk and have a lovely souvenir shop as well.



### The Eight Kings

10 locals recommend

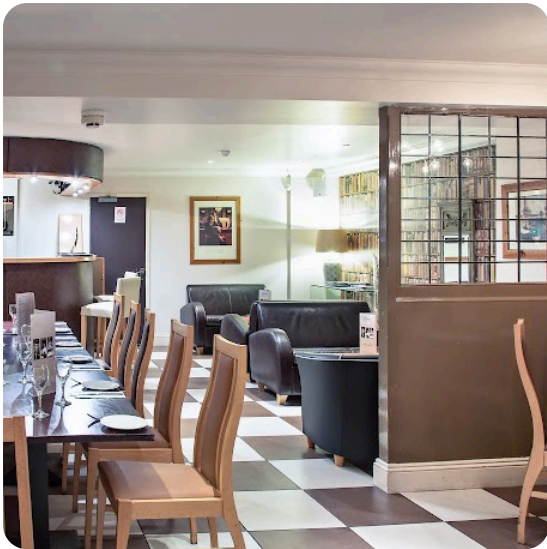
This is our local pub which serves great all day breakfasts and a delicious Sunday carvery. It is ideal for a relaxing drink after a busy day sightseeing.



### Billy Winters

132 locals recommend

This is a beach bar opposite Chesil beach. It is dog-friendly and you don't need to pre-book in advance.



### Enzo Ristorante & Pizzeria

24 locals recommend

I would definitely recommend this place for delicious pizza and lovely views of Weymouth beach. Book in advance to get a booking.



### The Beehive

20 locals recommend

The Beehive Cafe is located nearby to Chesil beach. It is great for a nice hot drink and a variety of delicious cakes.



### Upwey Wishing Well Tearooms & Water Gardens

40 locals recommend

If you fancy a high tea, you can treat yourself to a selection of finger sandwiches, fruit scones, strawberry jam and clotted cream and teas or italian coffee.

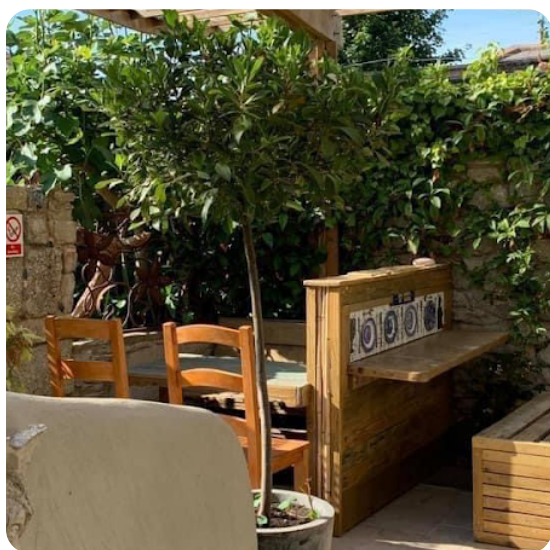


## The White Pepper Weymouth

13 locals recommend

This restaurant specialises in South Indian dishes and is located in a perfect spot opposite Weymouth beach. There is a good choice of vegetarian dishes as well.

The staff were very friendly.



## White Stones Art Cafe

36 locals recommend

There is a hidden garden at the back of the café to relax and enjoy a drink and a slice of cake.



## Rossi's Ices

15 locals recommend



### Rossi's Ices

15 locals recommend

A lovely ice cream treat for guests enjoying spending time on Weymouth beach.

---

## Activities



### Portland Alpacas

7 locals recommend

This is an amazing guided tour of Portland whilst walking with Alpacas. Karen is experienced and I highly recommend this trip, especially for families with children.



### Andrew Simpson Centre - Portland

In Portland, Andrew Simpson Centre offers a variety of different courses and activities. You can contact them by phone or online. Speak to Eden and mention my name KILPA



## Chesil Equestrian

6 locals recommend

Chesil Equestrian is an established family run, equestrian centre for horse trekking, livery, riding lessons and riding holidays on the beautiful Isle of Portland.



## Sandworld Weymouth

44 locals recommend

This is great place for children and adults. There is also a quiz you can do as you go around.